

the dynamism ©
of the immobility



denise e beppe berna

the dynamism ©
of the immobility



© denise e beppe berna
2017, bologna, italy

all ... by
beppe berna

works





Villa Castelbarco
Via Concessa, 4
Vaprio d'Adda, MI

Stand n. 9

April 1 – 9, 2017

*... an absolutely
unedited masterpiece*



Proto-Dogon Djennenke

128X

Very important male figure.

11th / 12th century.

Radiocarbon C14:
about 1040 - 1190 A.D.

H. cm. 47,5

*Collected by Pierre Langlois in the
1950's*

*Olivier Klejman, Paris, purchased
from the previous in the late 1970's.
French private collections.*





Ibibio

151X

Idiok ekpo, rare
mask for the
Ekpo society.

H. cm. 24,5

*Old American
collection.
Pierre Dartevelle,
Brussels.*





Bamana

150X

Ciwara, Beledugu style.

19th century.

L. cm. 43 – H. cm. 25,5

Old Belgian collection.

Pierre Dartevelle, Brussels.







Mambila

131V

Tadep, protective figure.

H. cm. 26,5

*Collected by Edward Klejman,
in the early 1970's.*

*Exhibited and published
[n.32] in 'la scultura della
nigeria centro-orientale',
Galleria del Vicolo Quartirolo,
Bologna, 1981.*





Ibibio

145X

Idiok ekpo, rare mask for the **Ekpo** society.

H. cm. 26,5

Collected by Edward Klejman in the late 1960's.

Klejman collection, Paris, until 2017.



Suku/Yaka

140X

Superb protective female figure.

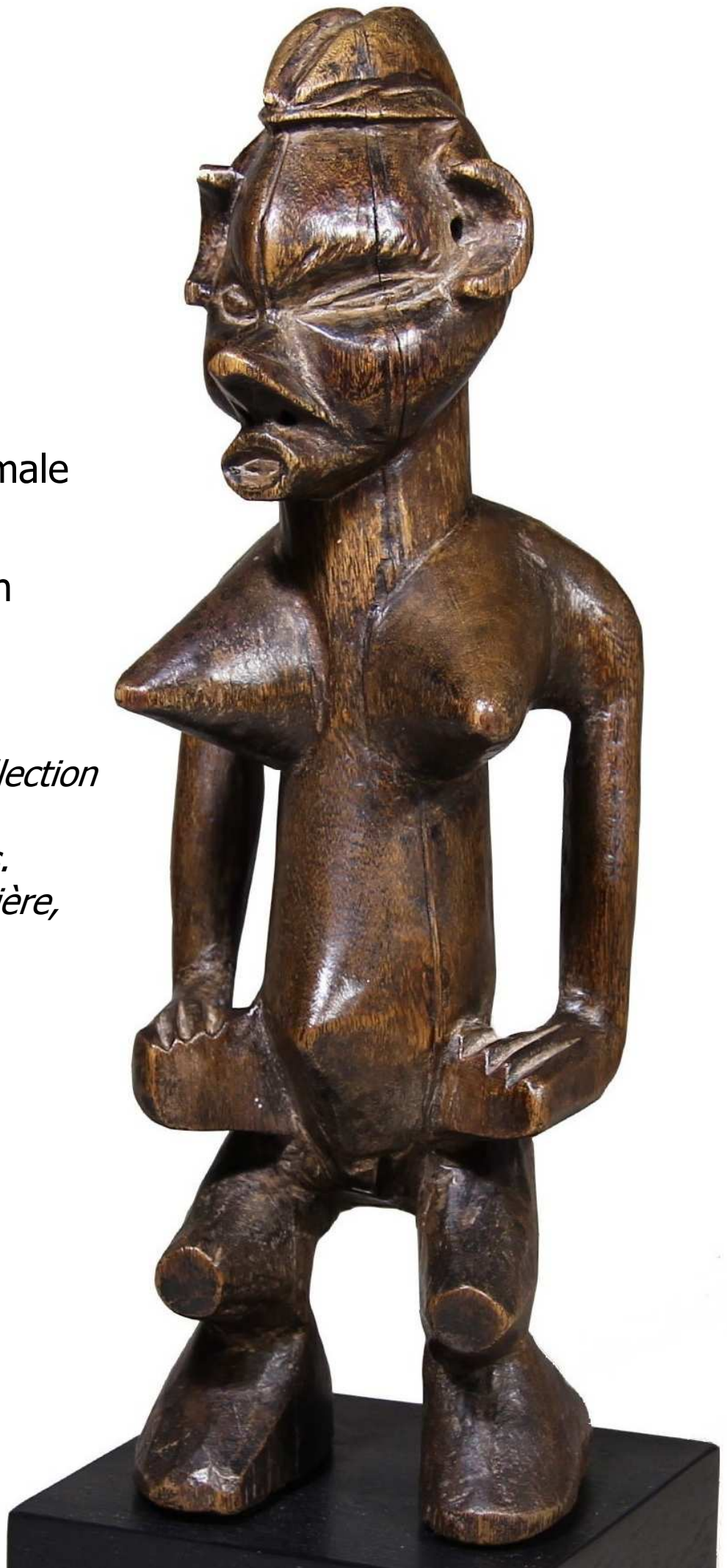
Late 19th / early 20th century.

H. cm. 28,5

Old Belgian colonial collection (Liege?).

Michel Koenig, Brussels.

David Henrion, Sauvenière, Belgium.









Salampasu

148X

Mukinka, initiatic
mask for the powerful
Ibuku society.

H. cm. 34

*Collected in the early
1960's by Belgian
colonials.*

*Purchased at this time by
Edward Klejman and
remained in his collection
until 2017.*

Bamileke

143X

Extremely rare rattle for healing practices associated with the rituals of the **Mu Po** figures.

H. cm. 31,5

*Old French colonial collection.
Edward Klejman, Paris.*





Ndaaka, Ituri

138X

'Mythical ancestor'
mask for initiatic
rituals.

H. cm. 29

*Collected by a Belgian
functionary in the
1960's.*







Mumuye

141X

Female figure.

H. cm. 57,5

*Collected by Marceau
Rivière, in Cameroon, in the
1970's.*





Ejagham 'Ekoi'

146X

Anthropomorphic head.

H. cm. 25

*Old German colonial
collection (before 1916?).
Edward Klejman, Paris,
from the early 1980's until
2017.*



Tellem Ireli style

13th/14th century.

149X

Extremely rare
hermaphrodite figure.

H. cm. 32,5

*Collected by Herman Haan in the
1964.*

*Joop van Stigt collection,
Amsterdam.*







Tsogho

139X

Ritual bell (gong), symbol of the **Missembo**, the judges who controlled the male initiation society **Mokenge**.

Late 19th / early 20th century.

H. cm. 45,5

Old French colonial collection before 1923.

Bernard Dulon, Paris.





Mambila

142X

Large and extremely rare male figure of **Suaga** society.

H. cm. 43,5

Important proveniences available.









Kerewa

118U

Gope, ancestor board kept in the 'men's house'.

Late 19th century.

H. cm. 120

Important proveniences available.



Dogon, Bombou Toro

152X

Extremely rare janiform figure.

19th century or earlier.

H. cm. 38,5

*Old American collections.
Joaquin Pecci, Brussels.*

*Published:
N. 38, pag. 96 in "Sacrifice", 2011,
Galerie Joaquin Pecci, Brussels.*



... for more information:
berna@debberna.it



Denise e Beppe Berna

arte tribale - arte archeologica
tribal art - ancient art

Via Borgo S. Pietro 43 - 40126 Bologna, Italy

Phone +39 051 253175

su appuntamento - by appointment only

copyright © d. & b. berna 2017